

View 72 - FLSmith Building

7158 SOUTH FLSMIDTH DRIVE, BUILDING B | MIDVALE, UTAH 84047

View 72 - FLSmith Building

7158 SOUTH FLSMIDTH DRIVE, BUILDING B | MIDVALE, UTAH 84047



Property Information

- > 16,847 - 51,044 RSF Available for Sublease (Full 2nd, 3rd, & 4th Floors)
- > Sublease Rate - \$25.50 psf Full Service
- > TOD (Transit Oriented Development) site with immediate access to TRAX
- > Centrally located to labor force along the Wasatch Front (direct access to I-15 via 7200 South)
- > Surrounded by numerous restaurants, entertainment venues, shopping and other support services
- > On-site cafeteria and accompanying sitting area offered free of charge
- > Six shared conference rooms that can be utilized free of charge
- > Lease term expires May 31, 2028. Tenant has termination option on August 31, 2022. If subtenant assumes lease for all three floors, then subtenant can occupy for the remaining lease term.
- > Parking Ratio: 5/1,000 RSF
- > Plug and Play with furniture available
- > Multiple fiber providers



Vic Galanis, SIOR
+1 801 441 5923
vic.galanis@colliers.com

Travis Yates
+1 801 947 8336
travis.yates@colliers.com

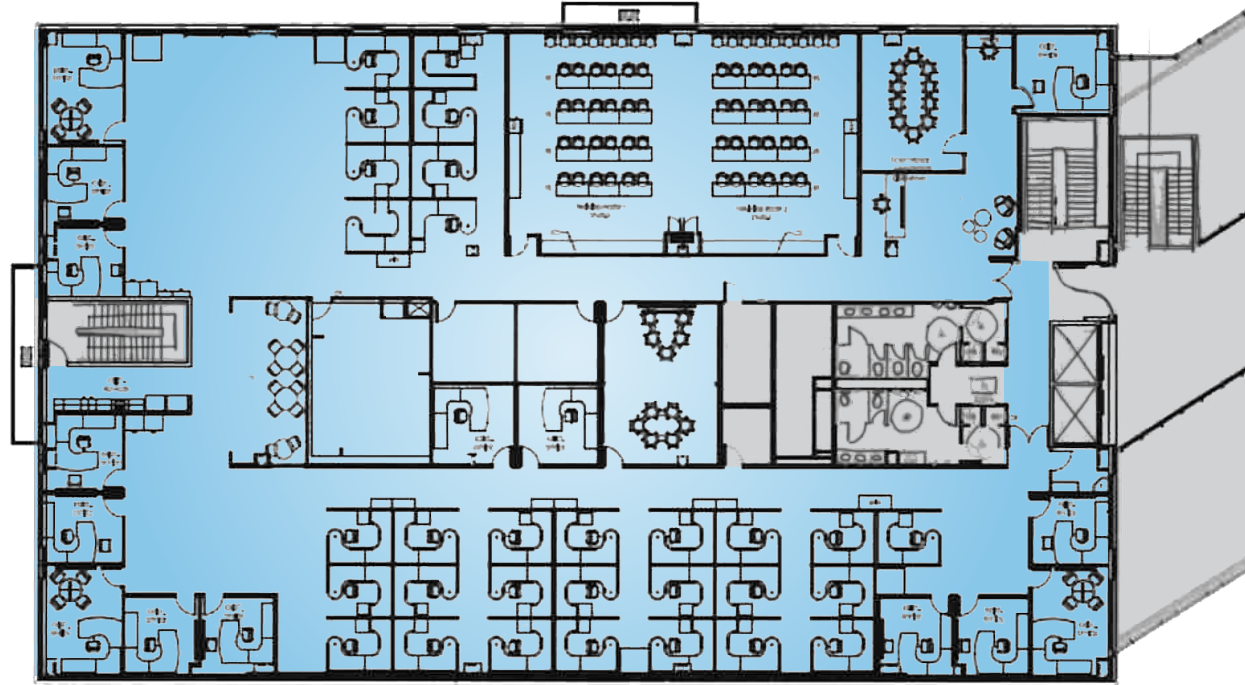
Chris Kirk, SIOR
+1 801 947 8385
chris.kirk@colliers.com

Colliers International
111 Main Street | Suite 2200
Salt Lake City, UT 84111
P: +1 801 947 8300

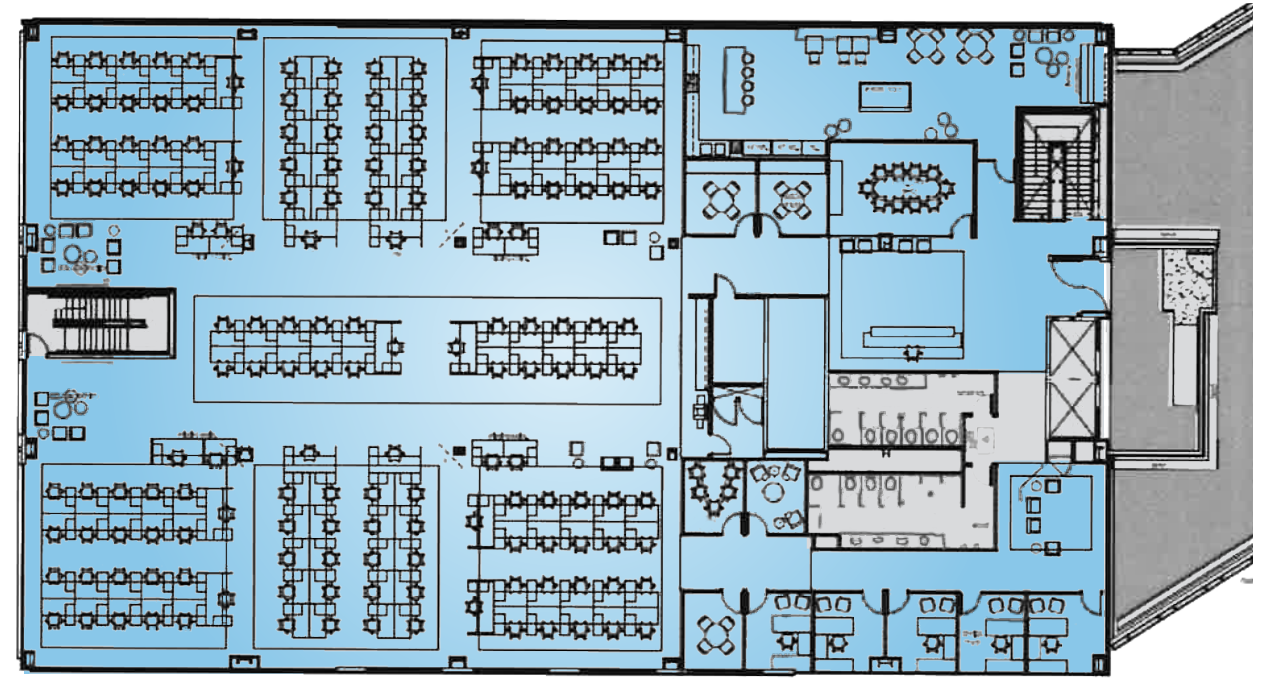
View 72 - FLSmidth Building B

7158 South FLSmidth Drive, Building B | Midvale, Utah 84047

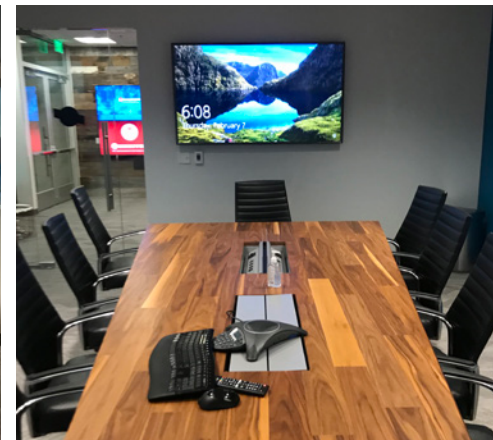
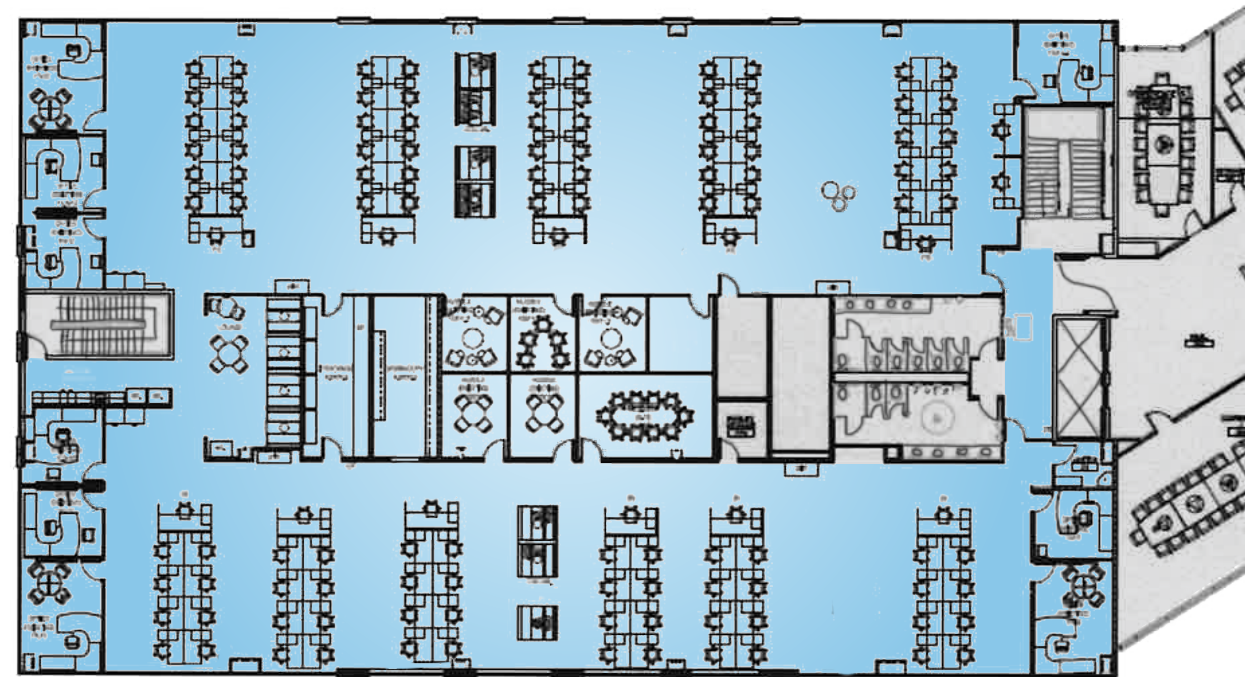
Second Floor: 8,433 - 16,867 RSF



Fourth Floor: 8,665 - 17,330 RSF



Third Floor: 8,423 - 16,847 RSF



Vic Galanis, SIOR
+1 801 441 5923
vic.galanis@colliers.com

Travis Yates
+1 801 947 8336
travis.yates@colliers.com

Chris Kirk, SIOR
+1 801 947 8385
chris.kirk@colliers.com

Colliers International
111 Main Street | Suite 2200
Salt Lake City, UT 84111
P: +1 801 947 8300

